



Surry Hill Community Forest

KENNEBEC LAND TRUST • SURRY HILL CAMPAIGN • SUMMER 2019

The Kennebec Land Trust is excited to announce our newest project—purchasing and permanently conserving 330 acres in Fayette, including the top of 600-foot Surry Hill. This extensive property features over 250 acres of forestland, streams flowing into our local lakes and ponds, valuable wetlands, and phenomenal scenic views. This new community conservation property will provide many recreational opportunities, including hiking, snowmobiling, hunting, mountain biking, and nature observation.

Planning for the Future

This ambitious effort is also an inspiring and hopeful example of how land trusts and other conservation owners are making a big difference in the world. Undeveloped land sequesters carbon - a natural climate solution. KLT plans to maintain approximately fifteen acres as open fields to preserve scenic views. The Surry Hill fields also offer tasty blueberries for hikers and habitat for pollinators, ground-nesting birds, and resident and migratory raptors.



Photo: Jane Davis

View of Oak Hill and Surry Hill from Pocasset Lake, Wayne.



Photo: Jane Davis

View of Mount Washington from Surry Hill.





Photo: Theresa Kerchner

KLT Advisor Norm Rodrigue and Stewardship Director Jean-Luc Theriault and view to Wayne.

Visit Surry Hill

Join KLT this summer to walk the land and take in the views. Several events are planned to welcome the public to the property. Walks are planned for Thursday, July 11 at 9:30 a.m. and Thursday, September 26 at 5:30 p.m. On Tuesday, August 6 at 5:30 p.m. we will host a Photography Walk on Surry Hill. KLT staff and local photographer, Phil Downes, will lead a hike for photography enthusiasts to capture the natural beauty of the land.

Explore Surry Hill

- **Tuesday, August 6, at 5:30 PM, Photography Walk**
- **Thursday, September 26, at 5:30 PM, Group Hike**
- **\$234,200 already donated**
- **\$56,900 still needed**

Meet at the bus turnaround at the south end of the Tom Surrey Road in Fayette. Free and open to the public. Please call KLT, 207-377-2848, for more information or for directions. Or visit our website, www.tkl.org. **Note:** At this time, there is no formal trail system.

The fields of Surry Hill.



Photo: Zach Harder

Land and Community

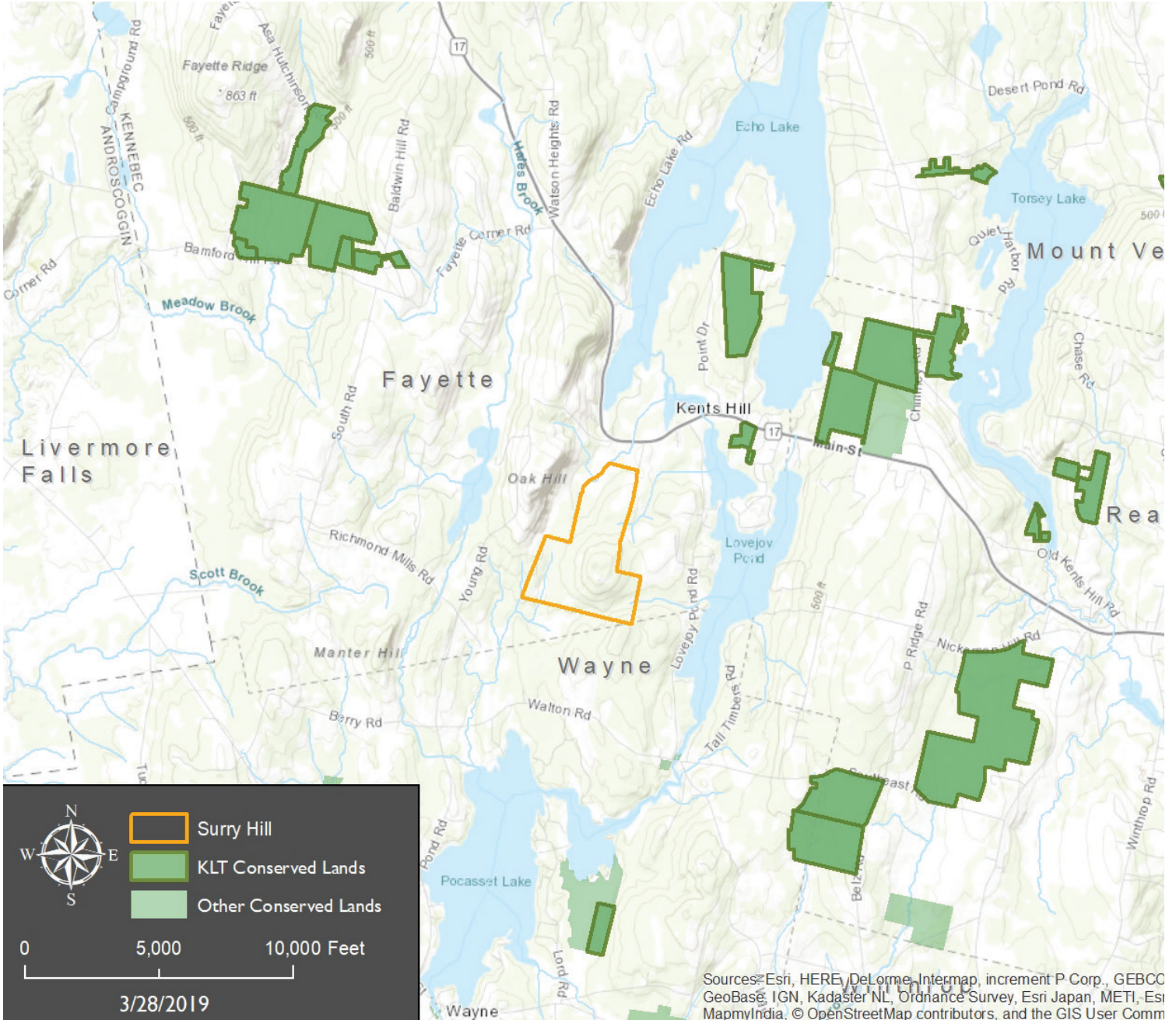
Since 1988, KLT has conserved over 6,300 acres on seventy-one properties and constructed over 47 miles of trails for everyone to enjoy. As landowners in Kennebec County we contribute to the local tax base since the properties we own are enrolled in the open space tax program. Taken together, all of our conservation lands represent approximately 1.5% of the acreage in KLT's 21-town, 412,000-acre service area.



Photo: Theresa Kerchner

Staff and Lands Committee visit the new property.

Map of Surry Hill property with surrounding KLT properties.



Kennebec Land Trust

207.377.2848
www.tkl.org

PO Box 261 - 331 Main Street
Winthrop, Maine 04364

The Kennebec Land Trust (KLT) works cooperatively with landowners and communities to conserve the forests, shorelands, fields, and wildlife that define central Maine. KLT protects land permanently, offers opportunities for people to learn about and enjoy the natural world, and works with partners to support sustainable forestry and farming.



A special thanks to all our supporters!

Generous members and supporters have already pledged or donated \$234,200 towards the Surry Hill Campaign. In order to complete this conservation project by the end of October, we need to raise an additional \$89,500 through private donations and grants. All funds raised will be dedicated to the purchase of the land, trail development, and the long term care of this valuable community conservation property. You can donate on our website, www.tkl.org, or mail a check to:
PO Box 261, Winthrop, Maine, 04364.



Photo: Zach Harder

KLT staff, Kirsten Brewer, taking in the view.